

MR300/CR/MVF110/1 SLIDING GATE

With rack – big lenght.



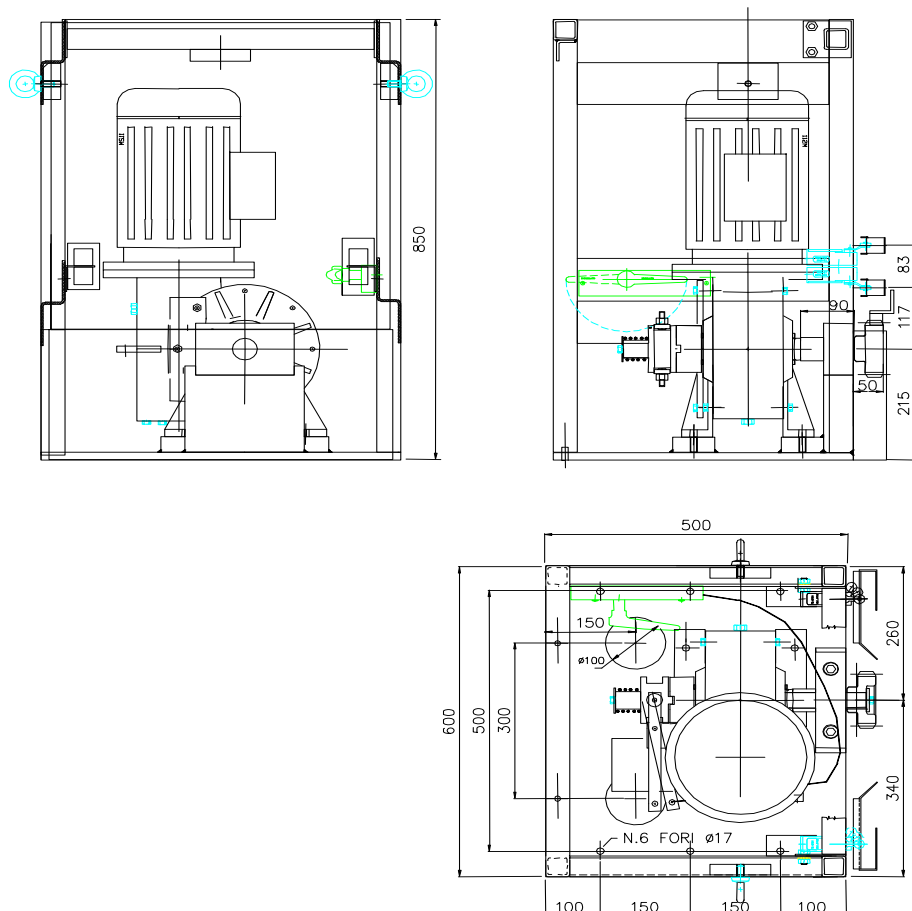
ASSOCIATO: UNIONE NAZIONALE COSTRUTTORI
DI AUTOMATISMI PER CANCELLI, PORTE
SERRANDE AFFINI

OPERATOR MR300/CR/MVF110/1 – MOTOREDUCTER FOR DOORS AND SLIDING GATES WITH EXCEPTIONAL WEIGHT AND DIMENSIONS

The operator MR300/CR/MVF110 is the correct solution for the automation of gates with weight and dimensions very elevated (up to 6 tons), flowing on wheels and rail. The particularly strong construction of all the components, the oil lubrication of the reduction gear with specific characteristics, the exuberant power of the motor and its ventilation, guarantees a long duration also with serious and intensive use. The not reversible reduction gear, maintains the leaf locked in closing and opening. The release for the handle emergency manoeuvre must be effected using the lever on board of the operator, you can find it opening the closet supplied with key lock. The motoreducer has a motor 2,2 kw 1400 rpm 230/400 volt 3phases..

The operator has 4 electromechanical limit switches used with the followings functions:

1. deceleration in opening
2. stop in opening
3. deceleration in closing
4. stop in closing



MR300/CR/MVF110/1 SLIDING GATE

With rack – big length.



The motoriducer is composed by:

Containment chassis and fixing of the motoriducer in floor built with strong outlined steel of suitable section electro-settled between them and to the plinth. Plinth constituted by plate to strong thickness in steel and predisposed with n.6 holes diam.17 to fixing to the mean ground with chemical wedges (not supply by Casit). Panels of closing chassis in painted plate or galvanized fixed with screws.

Reduction gear with screw gear type MVF110 in strong fusion of ghisa. Screw in steel to high resistance and milled by the full one and installed on bearing. Gear with crown in bronze milled by the full one. Slow tree built in steel to high resistance, installed on bearings and equipped by: release with frontal grafts to allow the un locking of the transmission - support additional type UCP - toothed pinion M=4 Z=25 for rack.(or M6 by request) Execution reduction gear for motor combining flanged type B5 dimension PAM112. Oil lubrication.

Handle RID98/MS1 for release system transmission by cable-scabbard installed inside the closet of the motoreducer. The handle release system results very rapid and at the same time protected.

Motor 3phase volt 380 execution B5 - dimension 112 - power 2,2 kw(Hp 3)

N.4 electromechanical limit switches installed on board chassis-motoreducer equipped with sliding contact shoe (to install during installation). N.2 of 4 limitswitches are used for the deceleration function and n. 2 of them are used for the stop function.

TECHNICAL DATA

Couple max motoreducer 55 Nm.

Weight Kg.210.

Speed: 9,5 mt/min.

Dimensions mm.500x600x850 h

POWER:

Induction motor 3phase volt 230/400 execution B5 - dimension 112 - power 2,2 KW(Hp 3) - turns 1400

The motoreducer, addressed to doors and gates with very elevated dimensions and weights, it has not of couple limiter. It will be therefore the technician's care to supply the automation with the regulating antinfortunicis and protections required by the Laws.

The activation of the release system with handle RID98/MS2 releases the transmission from the motoreducer to the gate and allows the mouvement to inclined and/or traction with some vehicle in case of black-out or something wrong.

MR300/CR/MVF110/1 SLIDING GATE

With rack – big lenght.



ASSOCIATO: UNIONE NAZIONALE COSTRUTTORI
DI AUTOMATISMI PER CANCELLI, PORTE
SERRANDE AFFINI

Note: with the motoreducer a control panel must be combined - **Not Inclusive In the Supply** .

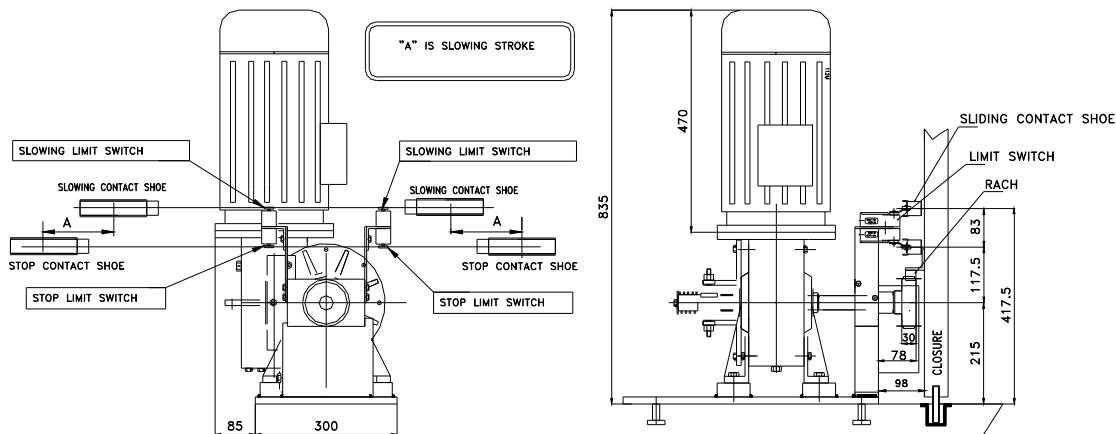
The motoreducer can be combined with control panel with inverter(model Casit KEQS12 - Power supply: 230 volt 1 phase for control panel – 230 volt 3phases for motoreducer).
With control panel KEQs12, when motor starts it turns subrate for some second, then it pass to the maximum speed;
In arrest the motor decelerate and subsequently stops it previous interception of the limitswitches to such functions preceded.
The arrest to partial run transmitted with commands and/or protections happens to the maximum speed without deceleration.

WARNING

THE **ACCELERATION STROKE** SETTED IN THE CONTROL PANEL **MUST BE GREATER** THAN **SLOWING STROKE "A"** COME BY THE INSTALLATION OF THE SLIDING CONTACT SHOE

THE **SLOWING STROKE "A"** COME BY THE INSTALLATION OF THE SLIDING CONTACT SHOE, **MUST BE SHORTER** THAN THE **ACCELERATION STROKE** SETTED IN THE CONTROL PANNEL.

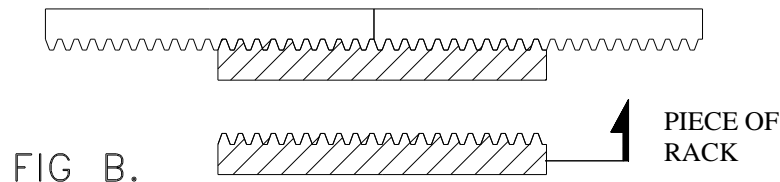
MINIMUM SLOWING STROKE $A = 500 \text{ mm}$



HOW TO INSTALL THE SLIDING CONTACT SHOE

MR300/CR/MVF110/1 SLIDING GATE

With rack – big lenght.



ASSEMBLAGE: After having perfectly placed the Gate with spirit lever, and after have positioned the mechanical latches so to avoid the rolling with a pulley, it is necessary to check the fluency of the gate (remember, the strength max of push has to be 20 kgs. by Ton.).

Place the operator on the ground over the length of the passage way perfectly with the spirit lever, the position of the operator must be calculates in relationship to the encumbrance of the rack.

Place the rack on the Gate, perfectly in level plain , the gap 0,5 - 1 mm. Max must be steady between the rack and the pinion.

Take particularly care of the junction of the elements using 1 piece of rack as reference.

PLACE THE SLIDING CONTACT SHOE: To the end of the gate so these allowing the complete stroke of the Gate, they work before the mechanical latches. (The Gate doesn't have to touch the mechanical latches that always have to be present).

After the placing, lubricate all the parts in movement. Connect all the electronical parts according to Laws, connect the eartn.

Before the start of the installation, check all protection devices and limitswitches.

ELECTRICAL CONNECTION MOTOR:

follow with care the instructions attached in the motor specifications for the type of motor installed.

Connect electrically according to Laws, connect the eartn. .

MAINTENANCE: Check periodically if all the devices protection work. Check periodically the tightening of the parts and lubricate all the parts in movement, check the good work of the clutch and regulate it. The maintenance must be effected from personal qualified.

INSTRUCTIONS: Read attentively the attached Book AVVERTENZE UNAC and follow its content. The datas of this brochure are indicative and they can be varied without warning.

CASIT 10040 Caselette (TO) V. Pietra Alta 1 - Tel. 011 / 9688230 FAX 011 / 9688363

www.casit.it